

BESPOKE
HOME
&
YACHT
SECURITY

ESTD *The* 1964
Diefenbaker
LUXURY SAFE HAVEN

THE DIEFENBAKER PROJECT.



BESPOKE
HOME
&
YACHT
SECURITY

ESTD *The* 1964
Diefenbaker
LUXURY SAFE HAVEN

REFERENCE

Whether geopolitical conflicts, climate disasters or economic instability — the world is becoming an increasingly unpredictable place. In such times, Safe Rooms and Bunkers are no longer extravagant ideas, but often the decisive factor between life and death.

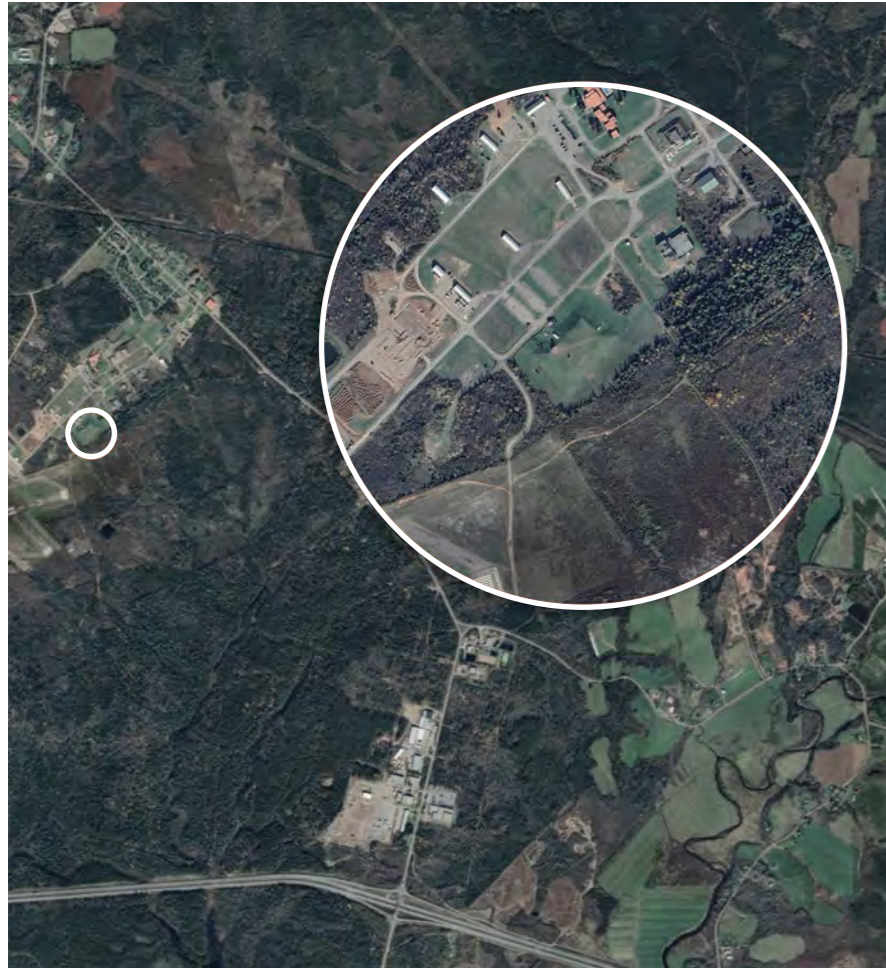
“The Diefenbaker Bunker” is a heavily fortified environment, purpose-built to serve as a secure refuge in case of invasion, catastrophe or any form of threat. Originally commissioned by the Canadian Government in 1964, its mission was to safeguard the nation’s leadership — including the Prime Minister and Military Command — from nuclear, biological or chemical attacks. The facility was designed to shelter up to 350 people for six months in complete autonomy.

Today, Safe Rooms and Bunkers have become an essential requirement for exposed individuals, assets and institutions.

“An invitation to serenity, all-inclusive security, exclusivity and peace of mind.”

BESPOKE
HOME
&
YACHT
SECURITY

ESTD *The* 1964
Diefenbaker
LUXURY SAFE HAVEN



LOCATION

Effortless arrival: Private aviation access is at your doorstep. Debert Airport, a private airstrip, is located less than half a mile from The Diefenbaker. For international arrivals, Halifax Stanfield International Airport is a short 25-minute helicopter flight or 50-minute car ride away.

This strategic proximity ensures that members can reach their secure, private suites swiftly and discreetly from major North American cities such as Boston, New York, Toronto and Montreal.



ESTD *The* 1964
Diefenbaker
LUXURY SAFE HAVEN



BESPOKE HOME & YACHT SECURITY.

The world's leading architects of utmost security.

As the operating high-end security force behind The Diefenbaker, Bespoke Home & Yacht Security delivers comprehensive protective solutions designed to ensure the highest level of secrecy and sovereignty — including:

- Close Protection & Global Extractions
- Bespoke Armored Vehicles
- Anti-Drone Systems
- Perimeter Intrusion Detection
- Armored Doors & Bulletproof Windows
- Exclusive Panic Rooms
- Bulletproof Serenity Zones
- Bunkers, Vaults & Fortified Spaces
- Seamless integration for Home - & Yacht Security

We are proud to serve as the world's premier provider for family and asset protection, medical readiness, anti-kidnap strategies and discreet extractions — all operated exclusively by elite ex-special forces.

Upon request, we can extract and transport family members from any global location directly to The Diefenbaker, under full confidentiality.

Ultimate Security – Made in Germany.



BESPOKE
HOME
&
YACHT
SECURITY

ESTD *The* 1964
Diefenbaker
LUXURY SAFE HAVEN

THE DIEFENBAKER BUNKER. THE EXTERIOR.

A legacy of resilience — redefined for tomorrow. Once a Cold War-era stronghold, The Diefenbaker has been transformed into an elite sanctuary, seamlessly merging cutting-edge security infrastructure with refined exclusivity.

Key exterior features:

- 64,000 sq ft under ground structure
- 50 bespoke private suites
- Maximum protection for exposed persons
- High-security asset protection
- Self-sustaining energy, water & food systems
- Private airfield with runway

BESPOKE
HOME
&
YACHT
SECURITY

ESTD *The* 1964
Diefenbaker
LUXURY SAFE HAVEN



AN INVITATION TO SERENITY. THE INTERIOR.

Experience timeless elegance and full-spectrum privacy — all within a sanctuary of quiet sophistication.

Every element of your stay at The Diefenbaker is meticulously designed to offer unmatched comfort and total peace of mind. On-site services include:

- 24/7 high-security protection
- Advanced medical care
- Gourmet dining lounges
- Wellness and spa facilities

All suites are fully customizable to individual preferences — from layout and finishes to technology and furniture.

Available Suite Types:

- Palisade Suites (for 2 persons)
- Martello Suites (for 4 persons)

BESPOKE
HOME
&
YACHT
SECURITY

ESTD *The* 1964
Diefenbaker
LUXURY SAFE HAVEN



PALISADE SUITES

The Palisade Suites offer intimate yet exclusive living for couples or individuals seeking personal space and tranquility. From integrated storage to elevated ceiling heights, every detail has been crafted for serenity and refined aesthetics.

Features:

- 300 sq ft Suite
- 14 ft ceilings
- Private loft area
- Personalized climate with heat pumps

BESPOKE
HOME
&
YACHT
SECURITY

ESTD *The* 1964
Diefenbaker
LUXURY SAFE HAVEN



MARTELLO SUITES

Designed for families or small groups, the Martello Suites offer spacious living while balancing privacy and connectedness. These residences include expanded floorplans, high-quality materials, and an elevated ambiance with thoughtful design.

Features:

- 600 sq ft Suite
- 14 ft ceilings
- Lofted storage
- Custom interior design
- Option to combine suites for a fully bespoke residence

BESPOKE
HOME
&
YACHT
SECURITY

ESTD *The* 1964
Diefenbaker
LUXURY SAFE HAVEN



FINEST DINING

Even in times of uncertainty, culinary excellence remains a cornerstone of comfort. At The Diefenbaker, our world-class chefs curate gourmet experiences that rival the world's finest restaurants — ensuring that every meal nourishes not only the body, but also the soul.

Ingredients are carefully selected, prepared with precision and tailored to the highest standards of health, nutrition, and personal preference.

We of course accommodate allergies, intolerances and dietary requirements with bespoke menus crafted just for you.

A refined ambiance enhances every bite — an unparalleled dining experience, even in the most extraordinary circumstances.



BESPOKE
HOME
&
YACHT
SECURITY

ESTD *The* 1964
Diefenbaker
LUXURY SAFE HAVEN

WELLNESS & SPA

At The Diefenbaker, we believe that resilience begins with well-being. That's why we offer a full spectrum of medical, physical and mental wellness services — ensuring that every resident thrives in body, mind and spirit.

Whether seeking calm, balance or healing, residents have round-the-clock access to:

- Private Fitness Center
- Full-service Spa & Relaxation Rooms
- On-site Emergency Medical Services
- Mental Health Counselling & Personal Support

You don't just live securely — you live fully.



BESPOKE
HOME
&
YACHT
SECURITY

ESTD *The* 1964
Diefenbaker
LUXURY SAFE HAVEN

ASSET VAULTS

For clients with significant holdings and irreplaceable valuables, The Diefenbaker provides museum-grade, climate-controlled vaults engineered to protect the most sensitive and precious assets — even under extreme conditions.

Our AXA-approved asset vaults, designed by Bespoke Home & Yacht Security, are equipped with:

- Individual alarmed compartments
- 24/7 monitored access
- Fire and flood protection
- Backup power systems
- Precision environmental controls

Ideal for: • Fine art • Rare wines • Precious metals & jewelry • Digital media & crypto assets

When peace of mind needs a lock — we build the vault around it.

BESPOKE
HOME
&
YACHT
SECURITY

ESTD *The* 1964
Diefenbaker
LUXURY SAFE HAVEN



DATA CENTER SENSITIVE COMPARTMENTED INFORMATION FACILITY (SCIF)

Our SCIF-level data center offers the highest level of information security available in any civilian context — ideal for storing sensitive data, digital assets, or operating protected communications.

Key features include:

- Advanced encryption and state-of-the-art access control
- Shielded architecture to prevent cyber intrusion and signal interception
- Surveillance systems with zero latency
- Uninterruptible power supply and redundant fail-safes
- Temperature- and humidity-regulated environments

When your digital presence matters as much as your physical security — we protect both.

BESPOKE
HOME
&
YACHT
SECURITY

ESTD *The* 1964
Diefenbaker
LUXURY SAFE HAVEN



TIMELINE & FINANCIALS

TIMELINE

- 2024: Initial construction started
- 2025: Construction of 15 Suites, Entrance & Café
- 2026: Construction of 20 Suites, Lobby & Main Level
- 2027: Construction of 15 Suites, Wellness & Spa

PALISADE SUITE

- USD 1.25 Mio. net
- 40% deposit / 30% mid-point / 30% completion
- Ownership secured by registered stake in the fallout complex
- USD 100,000 annual membership fee

MARTELLO SUITE

- USD 2.5 Mio. net
- 40% deposit / 30% mid-point / 30% completion
- Ownership secured by registered stake in the fallout complex
- USD 200,000 annual membership fee

Investment not only in property — but in sovereignty, resilience, and peace of mind.



ESTD *The* 1964
Diefenbaker
LUXURY SAFE HAVEN



EXCLUSIVE SALES

Grounded in principles of integrity, honesty and absolute discretion, we offer the Bespoke Suites at The Diefenbaker exclusively to a private, global clientele. Our promise: every interaction is personal, secure and confidential.

The trust of our clients is our highest currency – and we honor it with quiet excellence.

CONTACT FOR THE AMERICAS:

Dean Cryer, Director The Americas:
E-Mail: dc@bespokehomesecurity.com

CONTACT FOR EUROPE & REST OF WORLD:

Mag. Matthias Fitzthum, CEO:
E-Mail: mf@bespokehomesecurity.com

www.bespokehomesecurity.com

BESPOKE
HOME
&
YACHT
SECURITY

ESTD *The* 1964
Diefenbaker
LUXURY SAFE HAVEN

THE DIEFENBAKER PROJECT.